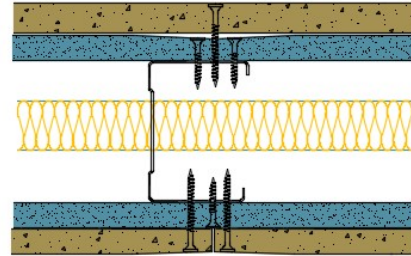


AS70-B-165(25) - SPEEDLINE System Data Sheet - Version V1 (24-10-23)

SPEEDLINE 70mm Acoustic 'C' Stud Partition
 @600mm Ctrs, with Inner BG Gyproc 12.5mm
 SoundBloc, Outer BG Gyproc 15mm DuraLine
 each side, 25mm APR



System Performance Breakdown

Fire Resistance:

BS476 Part 22:1987:

Test Ref & Date or Applied Ref & Report:

Max Height:

Thickness:

Duty Grade: BS 5234: Part 2:1992:

Sound Insulation:

60/60 Minutes (Integrity/Insulation).

BTC 17580F - BRE Report P102396-1011A

Refer to Speedline Specification Clause

127 mm. (At Base Track, Excluding Finishes)

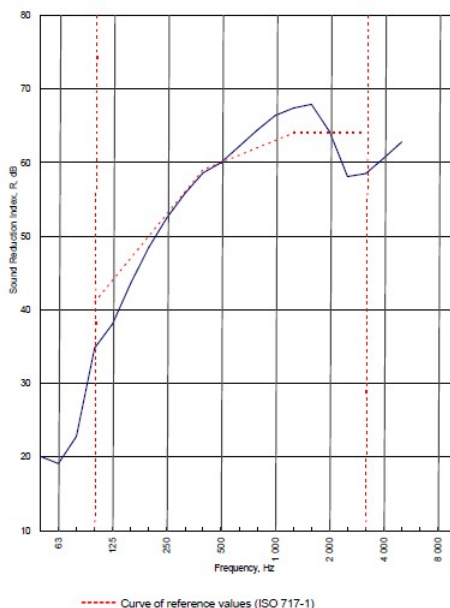
Severe - Annexes A-F

60 R_w dB, -8Ctr Date Tested or Assessed Against - 30/06/2010

p

Test Code:	H16909FA
Test Date:	30/06/2010

Freq. Hz	R dB
50	20.1
63	19.1
80	22.8
100	34.8
125	38.1
160	43.6
200	48.5
250	52.5
315	55.8
400	58.6
500	60.0
630	62.2
800	64.4
1 000	66.4
1 250	67.4
1 600	67.9
2 000	64.2
2 500	58.1
3 150	58.5
4 000	60.6
5 000	62.8
6 300	
8 000	
10 000	



Rating according to BS EN ISO 717-1:1997	R_w (C;Ctr) = 60 (-3;-8) dB		
Evaluation based on laboratory measurement results obtained by an engineering method:	$C_{50-3150}$ = -9 dB	$C_{50-5000}$ = -8 dB	$C_{100-5000}$ = -2 dB
	$C_{10-3150}$ = -21 dB	$C_{10-5000}$ = -21 dB	$C_{10-100-5000}$ = -8 dB

TESTED AT ONE OF THE UKAS ACCREDITED LABORATORIES BELOW

B.T.C (H-Ref on Graph)	
B.R.E	
AIRO	
S.R.L	

Customer: Metsec plc Hpcsec Division

BTC 16961A: Page 9 of 11



SPEEDLINE Drywall Systems, Adsetts House, 16 Europa View, Sheffield Business Park, Sheffield, S9 1XH.

Tel: 0114 231 8030.

Email: enquiries@speedlinedrywall.co.uk

(As per the requirements set out in ISO/IEC 17025:2017 regarding test data the results stated have been carried out by voestalpine Metsec plc as part of the contract to supply Speedline Metal Sections to SIG Plc)